



Exclusive Distributor:
Mitsubishi Motors Malaysia Sdn Bhd
 (680028-M)
 Level 6, Building A, Dataran PHB, Saujana Resort,
 Seksyen U2, 40150 Shah Alam, Selangor.

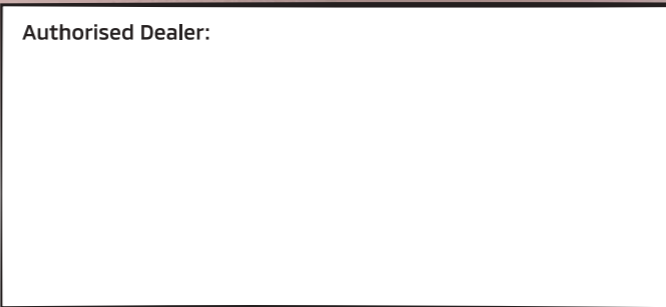
[f](#) [@](#) MitsubishiMotorsMalaysia



www.mitsubishi-motors.com.my

1. Mitsubishi Motors Malaysia reserves the right to alter any details of specifications and equipment without prior notice.
2. Details of specifications and equipment are also subject to change to suit local conditions and requirements.
3. Vehicles and specifications in this brochure may vary from models available locally. Vehicle body and accessory colours may differ slightly from printed photos in this brochure.
4. Some accessories upgrade are by Mitsubishi Motors Malaysia authorised dealers.
5. XPANDER is assembled by Mitsubishi Motors Malaysia Sdn. Bhd. under the license and technical assistance by MITSUBISHI MOTORS CORPORATION.

Authorised Dealer:



XPANDER



Begin your Adventure

with the No.1 Japanese
7-seater Crossover in Malaysia



WOW,
nice car!

if that's dad, i can't
wait to go camping!

i hope
it's dad!

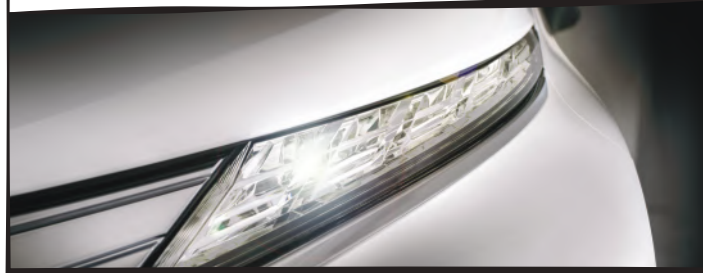
so instagrammable!



*Visuals shown are for illustration purposes only. Specifications may vary according to variant/market. Please consult your local Mitsubishi Motors dealer for more information.

Crystal LED Position Lamps

Sits at a higher position to offer improved night visibility.



Dual-Tone Alloy Wheels

16" rims that fit right in with the XPANDER's dynamic and sporty look.



Dynamic Shield Design

Wide-flared fenders add toughness to the SUV-inspired design which makes a powerful first impression.



Handsome Look That Everyone Loves

XPANDER never fails to impress with its dynamic lines. It's a bold & sleek crossover that's truly a class of its own.

L-Illumination LED Tail Lamps

Progressive design that also enhances safety by improving visibility to other road users.



LED Headlamps

Provides wide coverage of illumination for maximum vision.



First-in-class



Stylish Like a Superstar

*Visuals shown are for illustration purposes only. Specifications may vary according to variant/market. Please consult your local Mitsubishi Motors dealer for more information.

Take Anyone, Anything, Anywhere

Never worry about space again. XPANDER's cabin has been designed with precision to optimise every inch of space.



Under Seat Multi-Purpose Storage

Store your shoes and other items without getting the interior dirty.

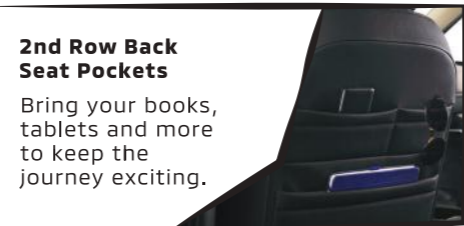
Glove Box with Double Compartment

Keep your things tidy with ample room for more.



2nd Row Back Seat Pockets

Bring your books, tablets and more to keep the journey exciting.



3rd Row Side Pocket & Cup-holder

A place to store and charge your phone at the back with a 12V socket. It also comes with a drink holder.



Smartphone Storage

A handy place to store your phone with USB ports and a charging port close by.



2nd Row Side Pocket & Cup-holder

Keep drink bottles to small containers firmly in place.



Cargo Floor Box with Lid

A convenient hidden storage that doesn't take up additional boot space.



Centre Console Box with Sliding Lid

Store more things or valuables. Also comes with a 12V socket to power up your devices.



Xpandable Seat Configuration

Store more or bigger items with flexible seat configurations.

Space that Fits All



*Visuals shown are for illustration purposes only. Specifications may vary according to variant/market. Please consult your local Mitsubishi Motors dealer for more information.

Stylish Leatherette Seats*

Comfortable and stylish. These easy to maintain seats complement the premium-looking interior.

*MMM Authorised Dealer Package.

Enjoy Relaxing Drives All Day

Go the distance in absolute comfort, XPANDER lets you feel completely at ease in day-to-day drives or on journeys beyond the city.

Tilt & Telescopic Steering

Adjust to the optimum height & position for a comfortable driving posture.

First-in-class

Keyless Operation System (KOS)

Easily unlock doors and start the engine.

9" Multimedia Display with Apple CarPlay™ & Android Auto Ready

No more phone holders. Apps such as Waze or Spotify are a touch away on the large capacitive touch-screen.

Rear Air Circulator

Enjoy a cool ride, even at the back. 4-speed fan adjusters allow rear passengers to control their own fan speed.

Cruise Control

Maintain a steady throttle and enjoy a comfortable drive during those long journeys.

Comfort Saves the Day



*Visuals shown are for illustration purposes only. Specifications may vary according to variant/market. Please consult your local Mitsubishi Motors dealer for more information.

Suspension Optimised for Comfort

Delivers a stable and comfortable drive even when cornering or on windy roads. Features shock absorbers with high-performance valves to reduce vibrations.



105 PS MAX POWER
141 NM MAX TORQUE

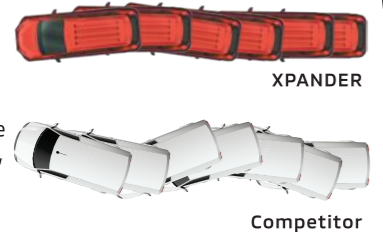


MIVEC Engine

Delivers the perfect balance of power and efficiency with low fuel consumption and reduced noise.

Better Driving Stability

Tower Strut and Rear Crossmember improve stability and handling, even on high speeds.



205mm

High Ground Clearance

Versatile to handle rough roads, light off-road terrain or even flash floods.

Go Where You Want Efficiently

Powered by Mitsubishi's ever-reliable MIVEC engine, XPANDER provides a comfortable drive for any occasion, for any destination.

5.2m



Turning Radius

Effortless turning and easier maneuverability, especially in tight spaces.

Power for Smooth Journeys



i sell you and buy that, ok?

my friend said it's super comfortable.

wah want to climb hill also no problem lah

*Visuals shown are for illustration purposes only. Specifications may vary according to variant/market. Please consult your local Mitsubishi Motors dealer for more information.

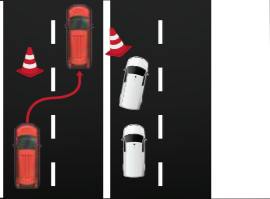


SRS Airbags
Protects driver and front passenger in a collision by absorbing the impact.



Rest Reminder
Reminds the driver to rest during long journeys.

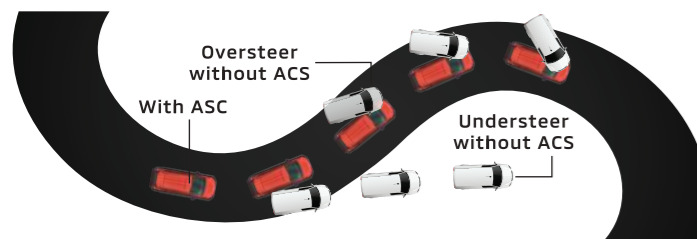
Anti-lock Braking System (ABS) & Electronic Brake-force Distribution (EBD)
ABS maintains maneuverability around obstacles while EBD reduces braking distance.



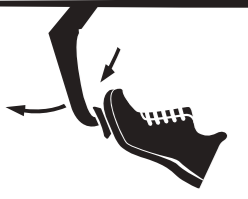
Hill-Start Assist (HSA)
Prevents the vehicle from rolling backwards on an incline.

Keep Calm and Travel On
Stay safe in all your travels. XPANDER always gives you a clear vision of your surroundings while keeping you from harm's way.

Active Stability Control (ASC) with Traction Control (TC)
ASC automatically applies brake-force to maintain control when understeering or oversteering. Traction Control assists in maintaining traction on slippery or rugged surfaces.



Brake Assist System (BAS)
During emergency situations, automatically applies more than usual braking force to ensure a quicker stop.



Driving Video Recorder (DVR)*
Record every moment in HD while you're driving.
*MMM Authorised Dealer Package.



Safety You Can Rely On

he must be a very pro driver...



Watch out for the bicycle!



All-Round Monitor (ARM)*
Maneuver and park easily with a birds-eye-view of your vehicle's surroundings.
*MMM Authorised Dealer Package.

*Visuals shown are for illustration purposes only. Specifications may vary according to variant/market. Please consult your local Mitsubishi Motors dealer for more information.

SPECIFICATIONS

Model / Variant		Xpander	
Engine & Transmission			
Engine Type	1.5L MIVEC DOHC 16 Valve		
Displacement	cc	1,499	
Max. Output (EEC-Net)	PS / rpm	105 / 6,000	
Max. Torque (EEC-Net)	Nm / rpm	141 / 4,000	
Transmission	4-speed Automatic		
Chassis & Suspension			
Suspension	Front	MacPherson Strut Coil Springs with Stabilizer Bar & Built-in Strut Bar	
	Rear	Torsion Beam	
Brake	Front	Ventilated Disc	
	Rear	Drum	
Steering	Rack & Pinion with Electric Power Steering (EPS)		
Tyres	205/55 R16		
Tyres & Rims	16" Dual Tone Alloy Design		
Dimensions			
Overall	Length	mm	4,475
	Width	mm	1,750
	Height	mm	1,730
Wheelbase	mm		2,775
	Track	Front	mm
Rear		mm	1,510
Weight	Kerb	kg	1,275
	Gross	kg	1,780
Min. Turning Radius	m		5.2
Fuel System	Electronically Multi-Point Injection		
Fuel Tank Capacity	litre	45	

STANDARD EQUIPMENT

Exterior Features			
Headlamps	Type	Auto LED	
	Daytime Running Lights (DRL)	With	
	Welcome Light and Coming Home Light System	With	
	Levelling Device	With (Manual)	
Door Mirrors	Power Adjustable & Fold with Integrated LED Turn Indicators		
Door Handles	Chrome		
Beltline Moulding	Chrome		
Windshield	Front	Sound Insulation Film	
Rear Spoiler	With (Integrated Type & LED High-Mount Brake Lamp)		
Antenna	Shark Fin		
Wipers	Front	With (Auto & Variable Intermittent)	
	Rear	With	
Interior Features			
Push Start Ignition	With		
Meter Panel	Type	High-contrast	
	Multi-Information Display (MID)	With (4.2" TFT Color LCD)	
	Eco Drive Assist	With (Score Indicator)	
Audio System	Type	9" Touch Screen, USB, Bluetooth with Apple CarPlay™ & Android Auto Ready	
	Speakers	6	

Interior Features		
Smart Phone Storage	Front	With
Center Console Storage	With (Sliding Lid)	
Air Conditioning	Front	With (Auto Climate)
	Rear Air Circulator	With
Steering Wheel	Type	Leather-wrapped with Audio & Cruise Control Switches
	Adjustment	Tilt & Telescopic
Cruise Control	With	
Power Windows	With (Driver's Side Auto Up/Down with Anti-Pinch)	
Smart Storage	With (Cargo Floor Box with Lid)	
Seats	Material	Leatherette
	Front Adjustments	Driver (Manual with Height Adjustment) Passenger (Manual)
Underseat Multi-Purpose Storage	With	
Second Row Adjustments	One Touch Tumble Feature with Sliding Function	
Storage	Smart Pocket Storage	
Third row Adjustments	With (Recline Only)	
Flat Folding Seats	With	

SAFETY

Active		
Anti-Lock Braking System (ABS)	With	
Electronic Brake-Force Distribution (EBD)	With	
Brake Assist (BA)	With	
Active Stability Control (ASC)	With	
Traction Control (TC)	With	
Brake Override System (BOS)	With	
Rest Reminder	With	
Hill-Start Assist (HSA)	With	
All-Round Monitor (ARM)	With (Guide Lines)	
Driving Video Recorder (DVR)	With	
Emergency Stop Signal System (ESS)	With	
Seatbelt Reminder	Driver & Passenger	
Parking Sensor	With	
High Mount Stop Lamp	With (LED)	
ISOFIX Child Restraint Mounting	With Top Tether (x2)	
Child Lock Protection	With	
Passive		
SRS Airbags	Dual Front SRS Airbags	
RISE Body	With Extra Rigid Frame	
Child Lock Protection	With (x2)	
Side Impact Door Beams	With	
Seatbelts	Front	3-point ELR with Double Pretensioner (Driver) & Force Limiter
	Rear	3-Point ELR (x3)
Collapsible Steering Column	With	
Collapsible Brake Pedal	With	
SECURITY		
Alarm System with Immobiliser	With	



● Red Metallic
○ Quartz White Pearl

● Titanium Gray Metallic
● Diamond Black Mica

5 YEARS
WARRANTY
UNLIMITED MILEAGE

*Visuals shown are for illustration purposes only. Specifications may vary according to variant/market. Please consult your local Mitsubishi Motors dealer for more information.